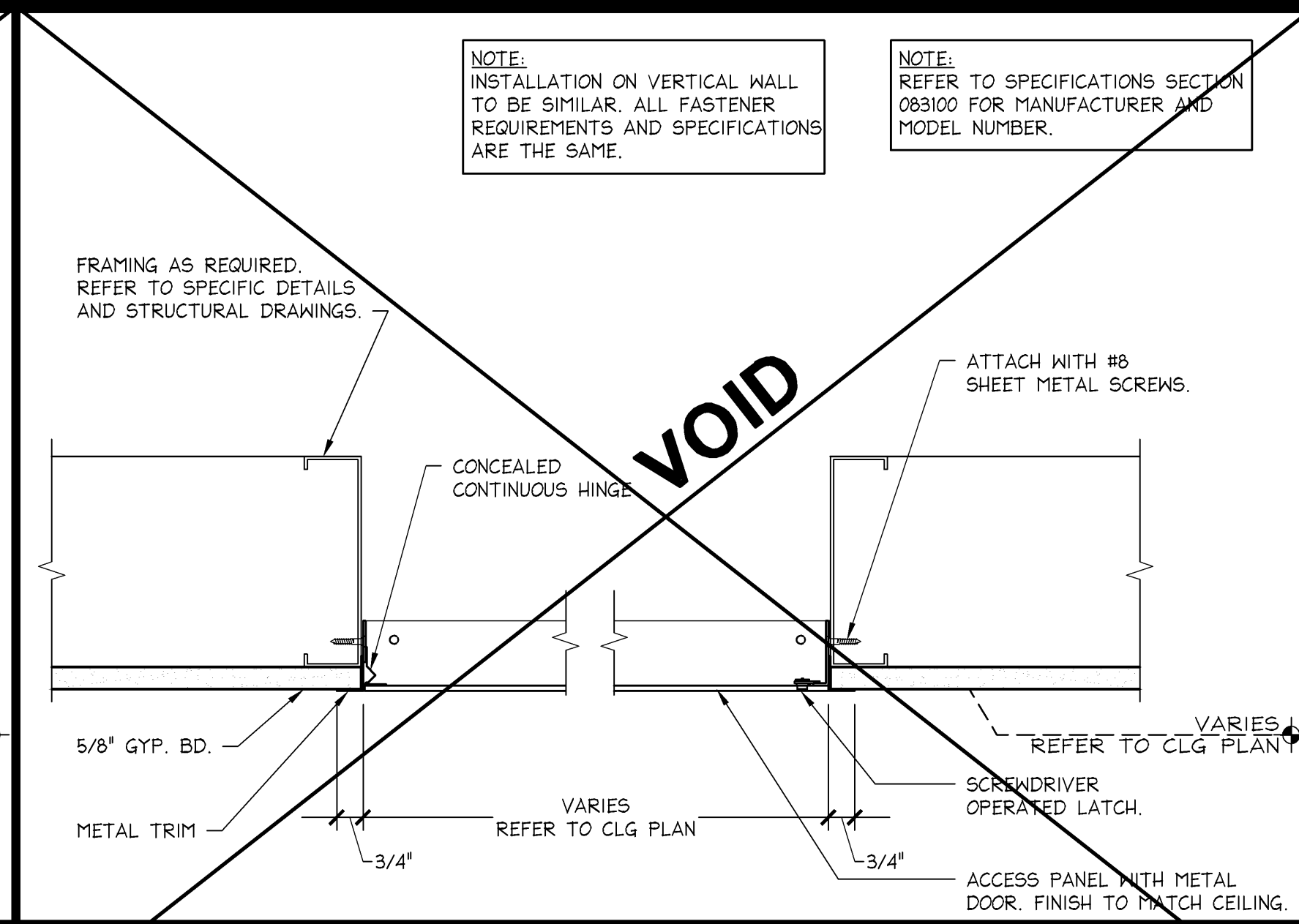


CEILING MOUNTED ACCESS PANEL DROP IN - TRIMLESS

3" ± 1'-0"

05D-A1201-S00-DETL

08.14.12

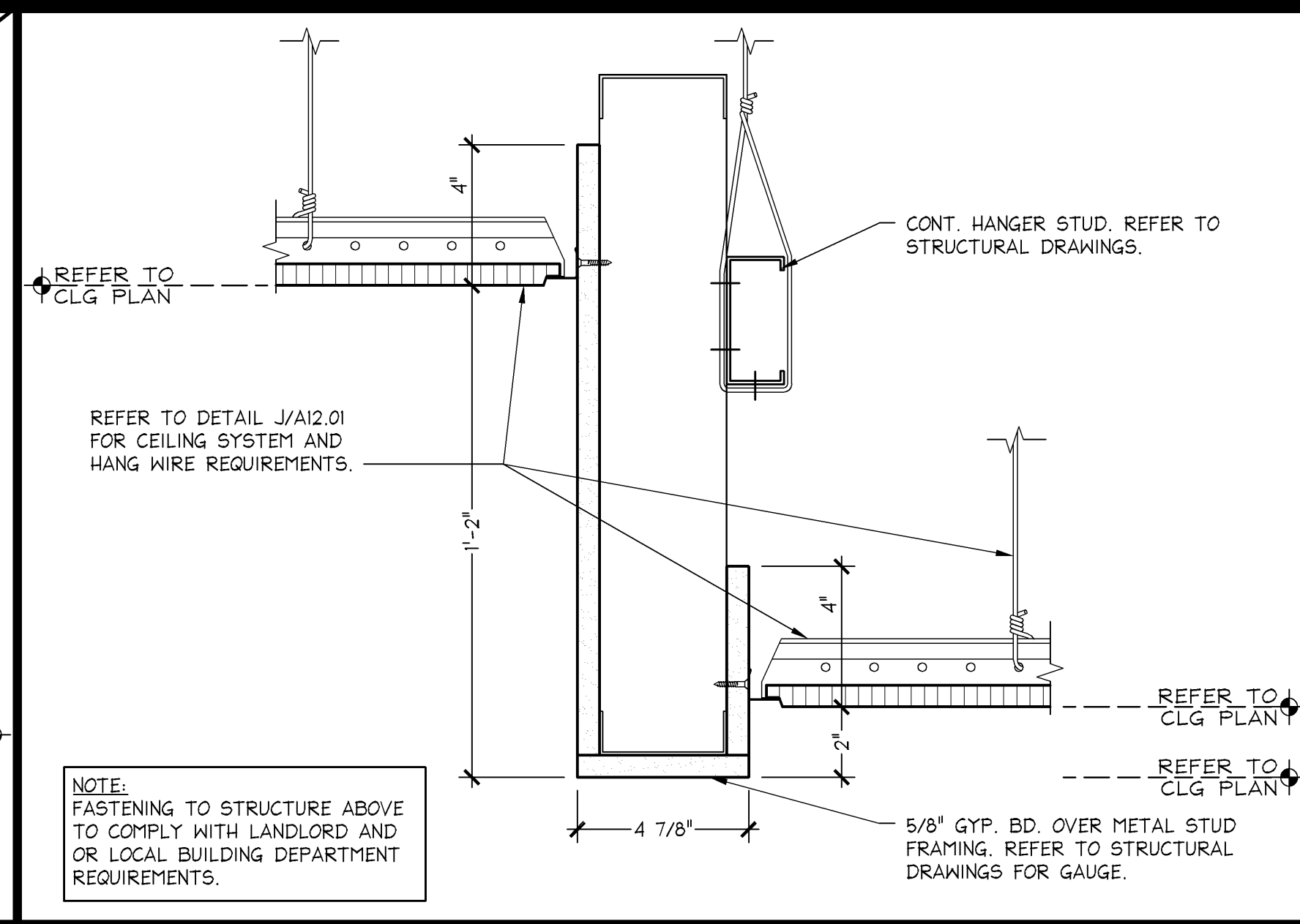


CEILING MOUNTED ACCESS PANEL METAL FLUSH MOUNTED

3" ± 1'-0"

05D-A1201-M00-DETL

08.14.12

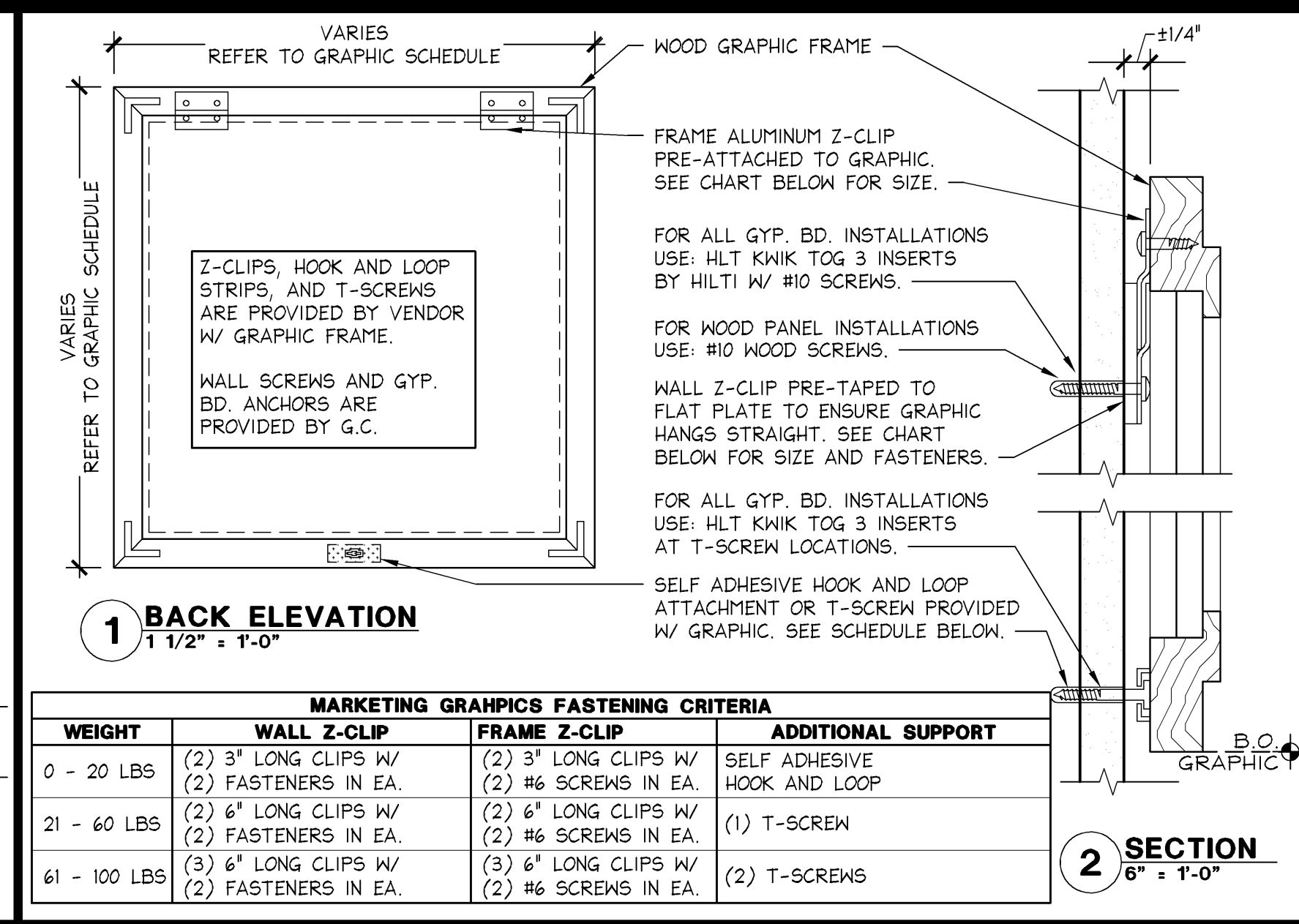


DREAMSTEAMER HEADER DETAIL

3" ± 1'-0"

05D-A1201-H00-DETL

08.14.12

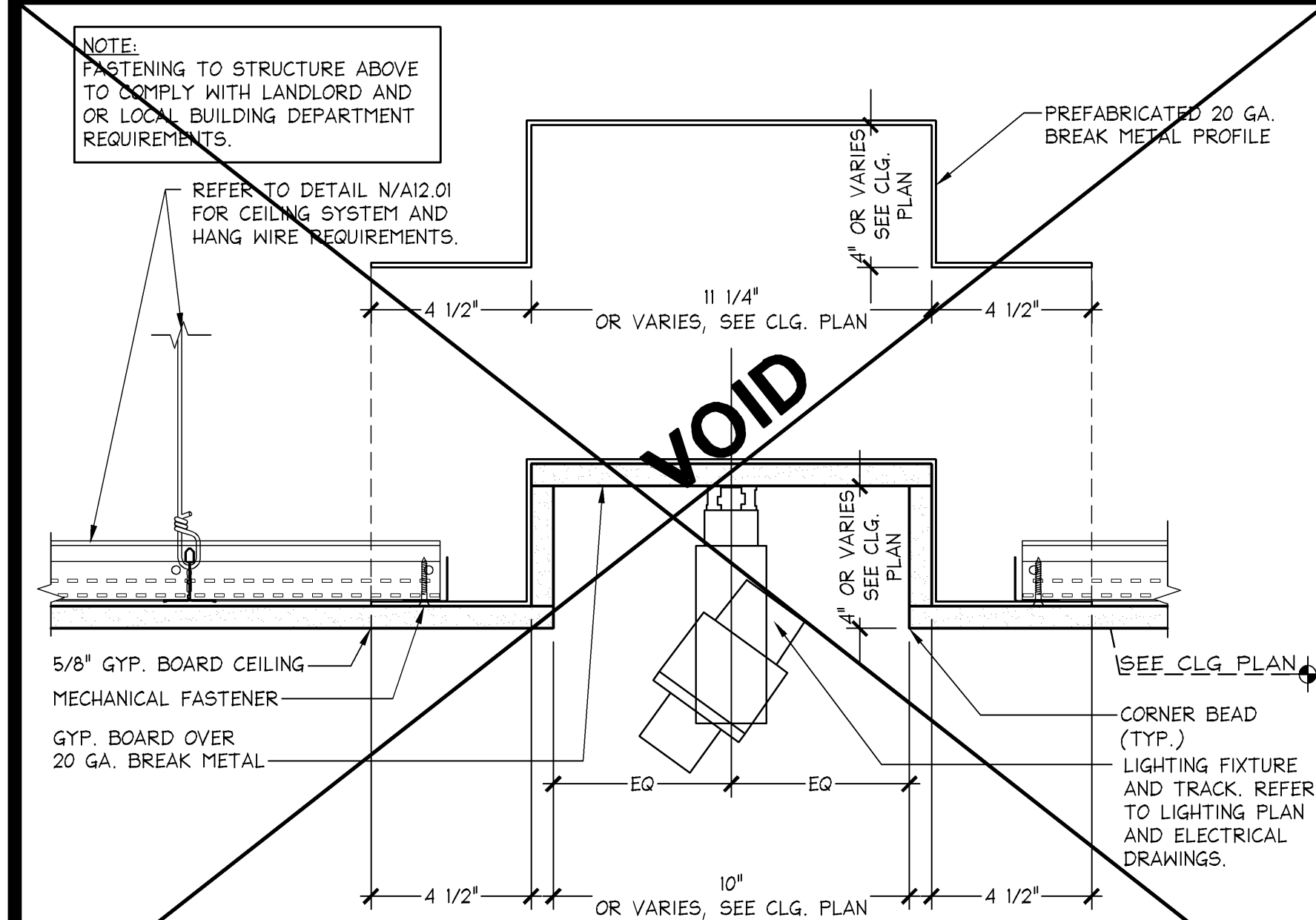


FRAMED GRAPHIC INSTALLATION DETAIL

VARIES

05D-A1201-D00-DETL

08.14.12

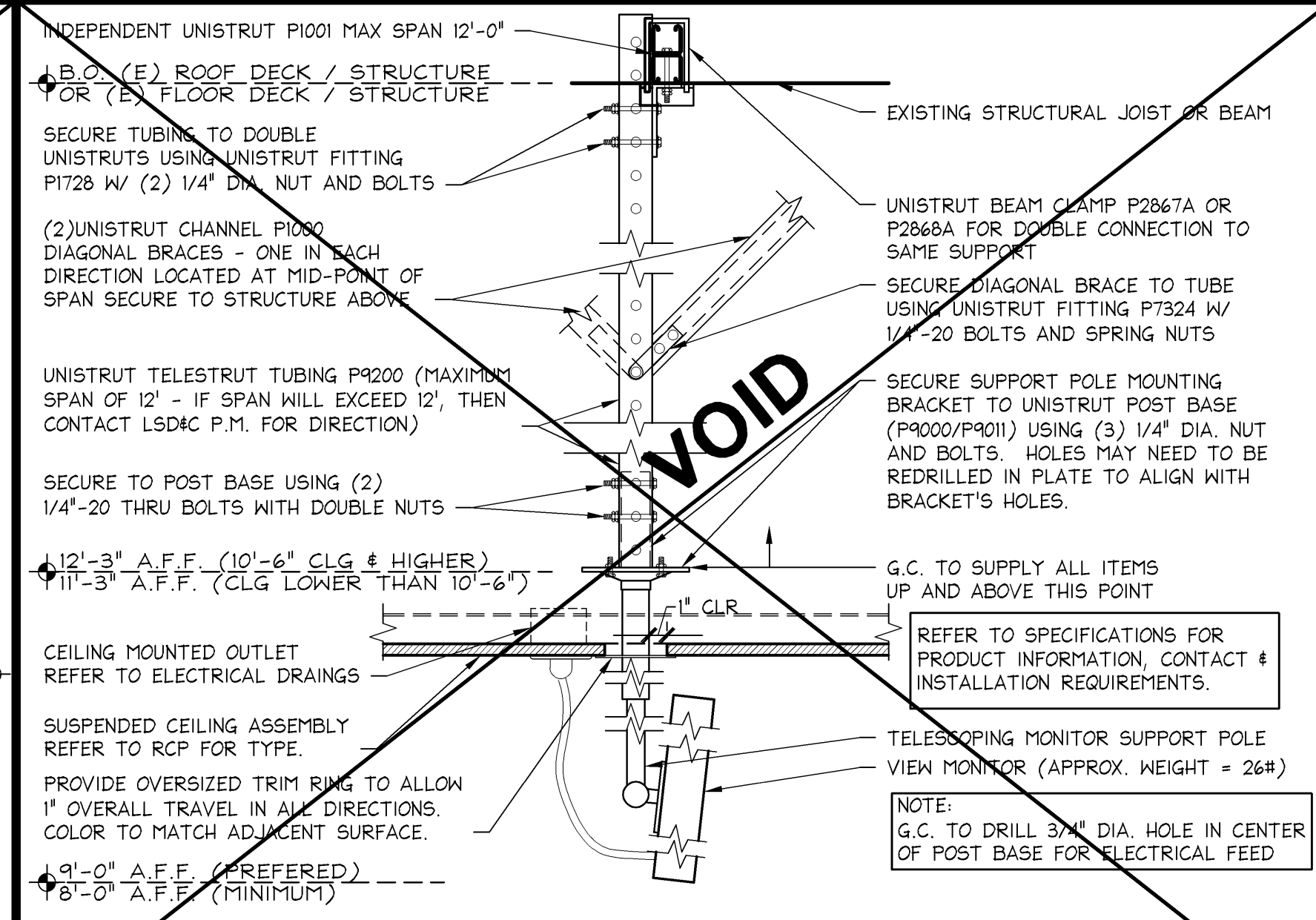


LIGHT TROUGH DETAIL

3" ± 1'-0"

05D-A1201-R00-DETL

08.14.12

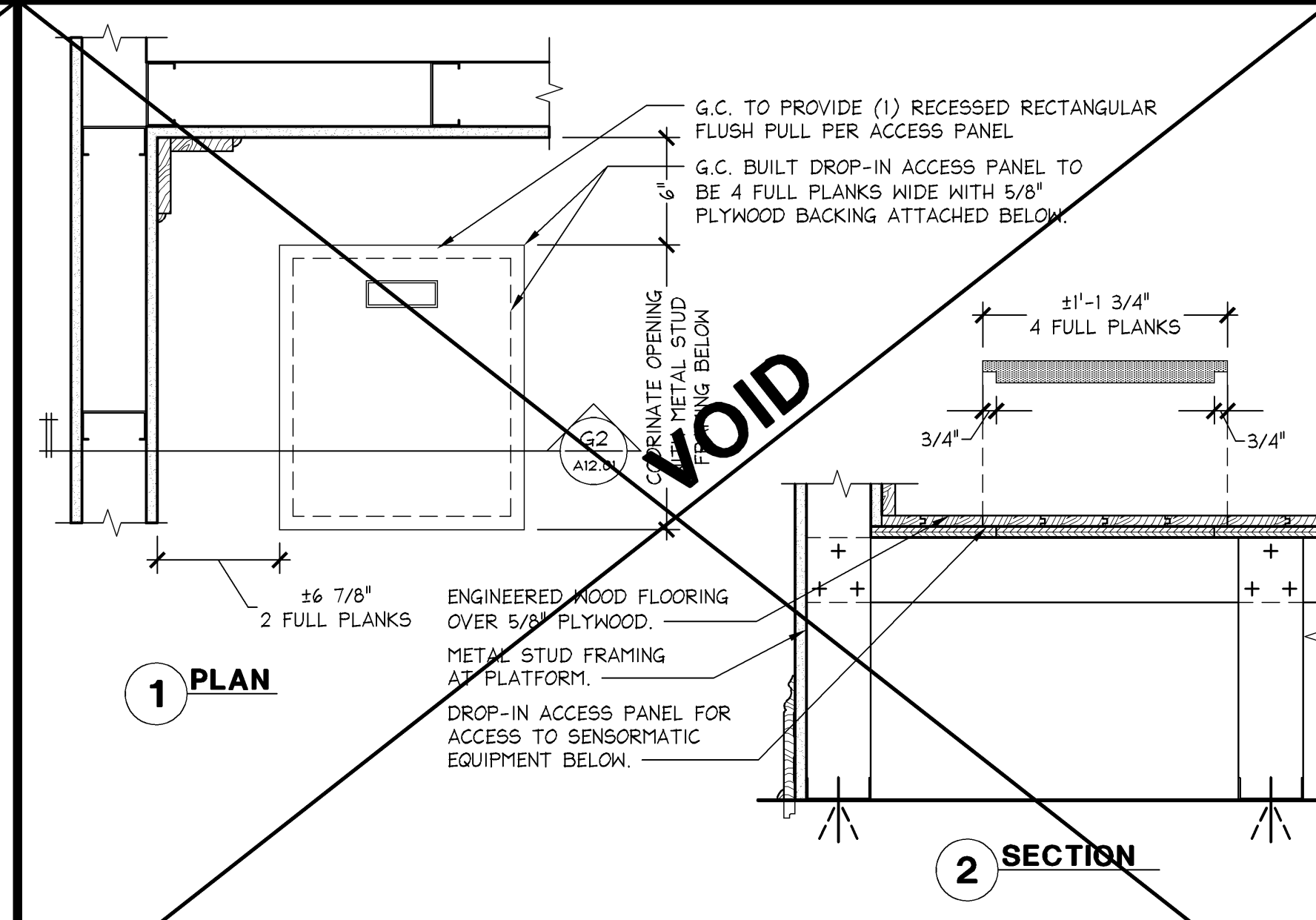


SECURITY MONITOR SUPPORT AT CEILING

1 1/2" ± 1'-0"

05D-A1201-L00-DETL

08.14.12

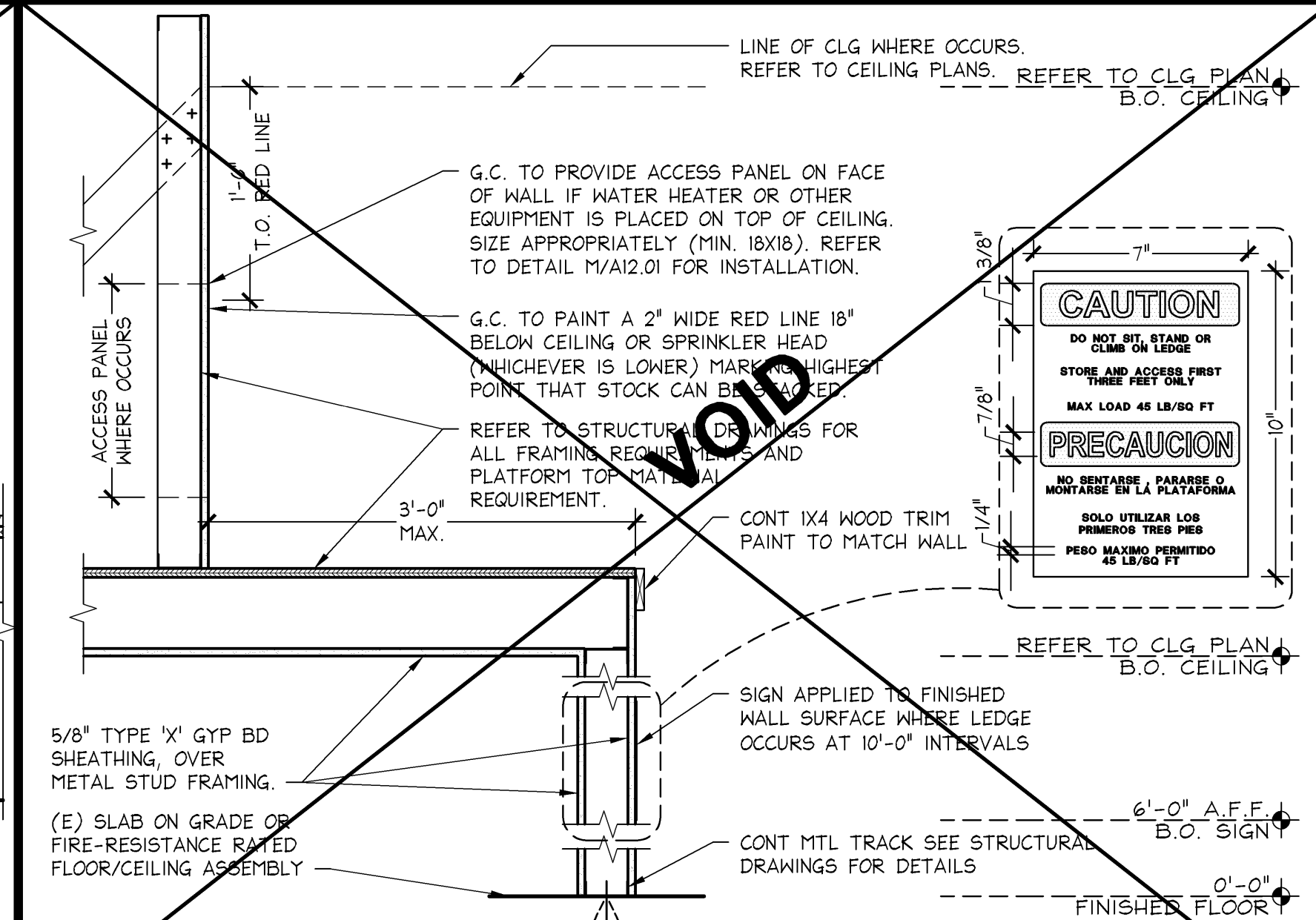


PINK DISPLAY PLATFORM ACCESS PANEL DETAILS

1 1/2" ± 1'-0"

05D-A1201-G00-DETL

02.21.12

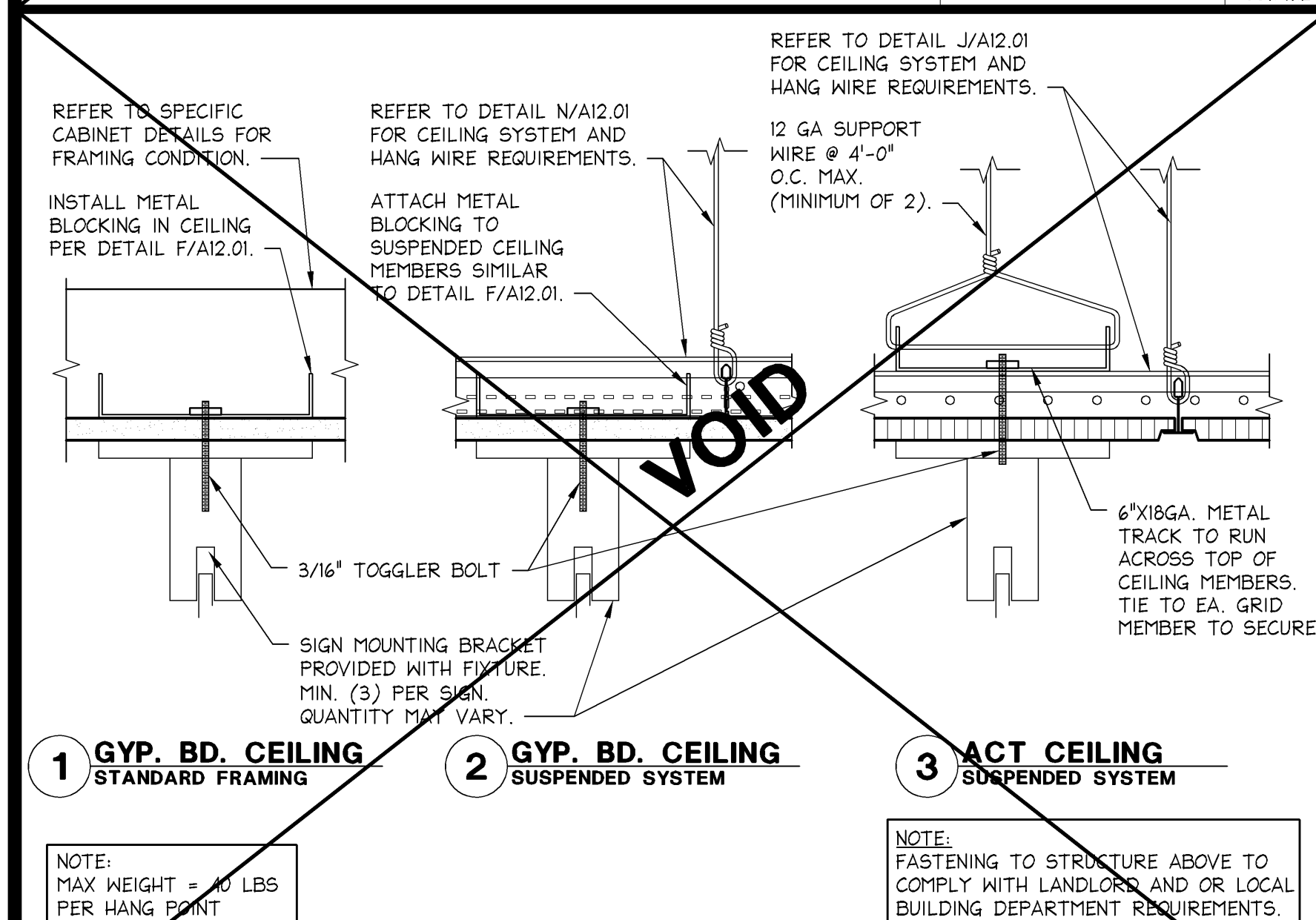


STORAGE LEDGE PARTITION

1" ± 1'-0"

05D-A1201-C00-DETL

08.14.12



SUSPENDED SIGN FIXTURE ATTACHMENT

3" ± 1'-0"

05D-A1201-P00-DETL

08.14.12

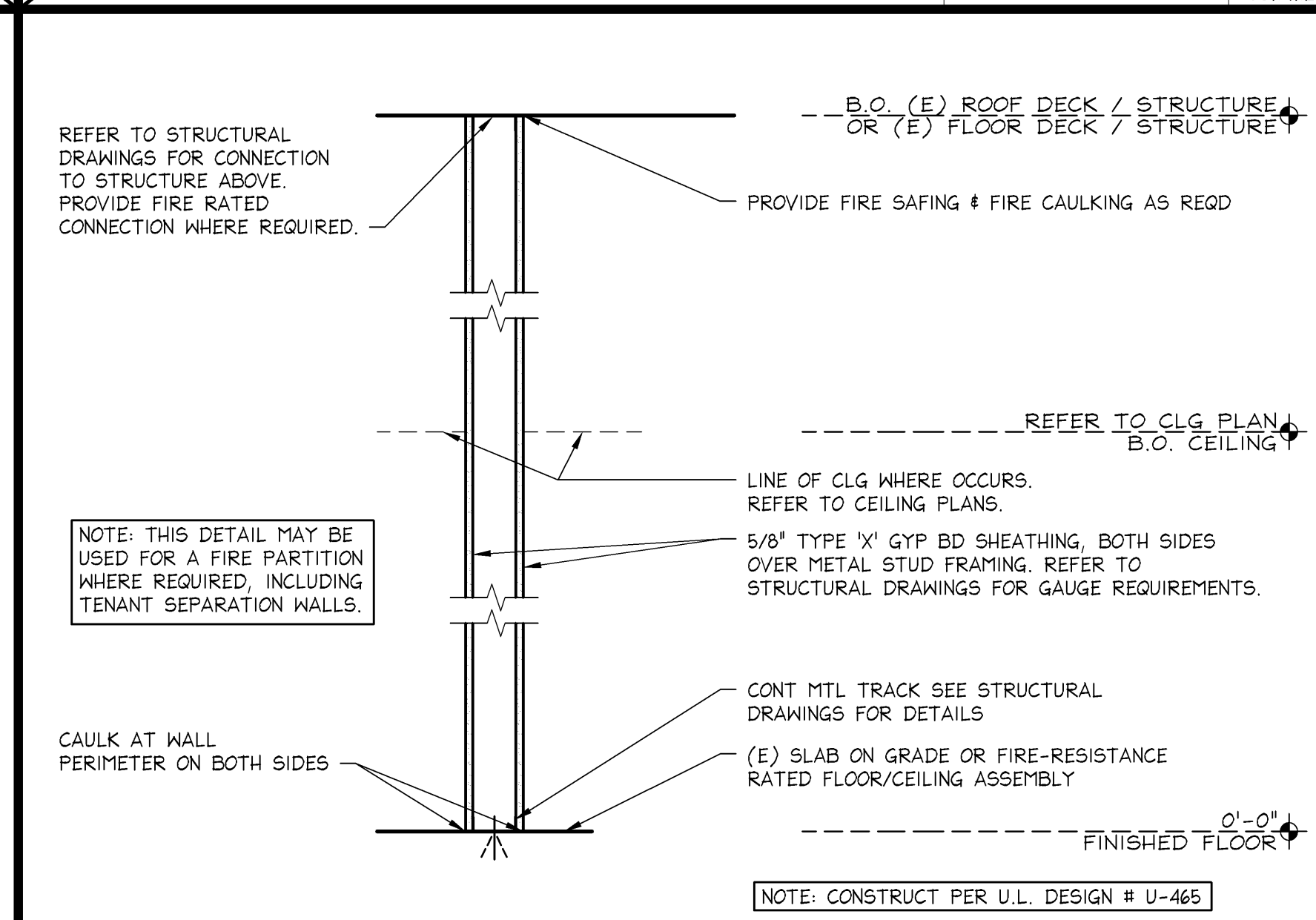


BACKING - HEAVY DUTY

3" ± 1'-0"

05D-A1201-F00-DETL

10.28.13

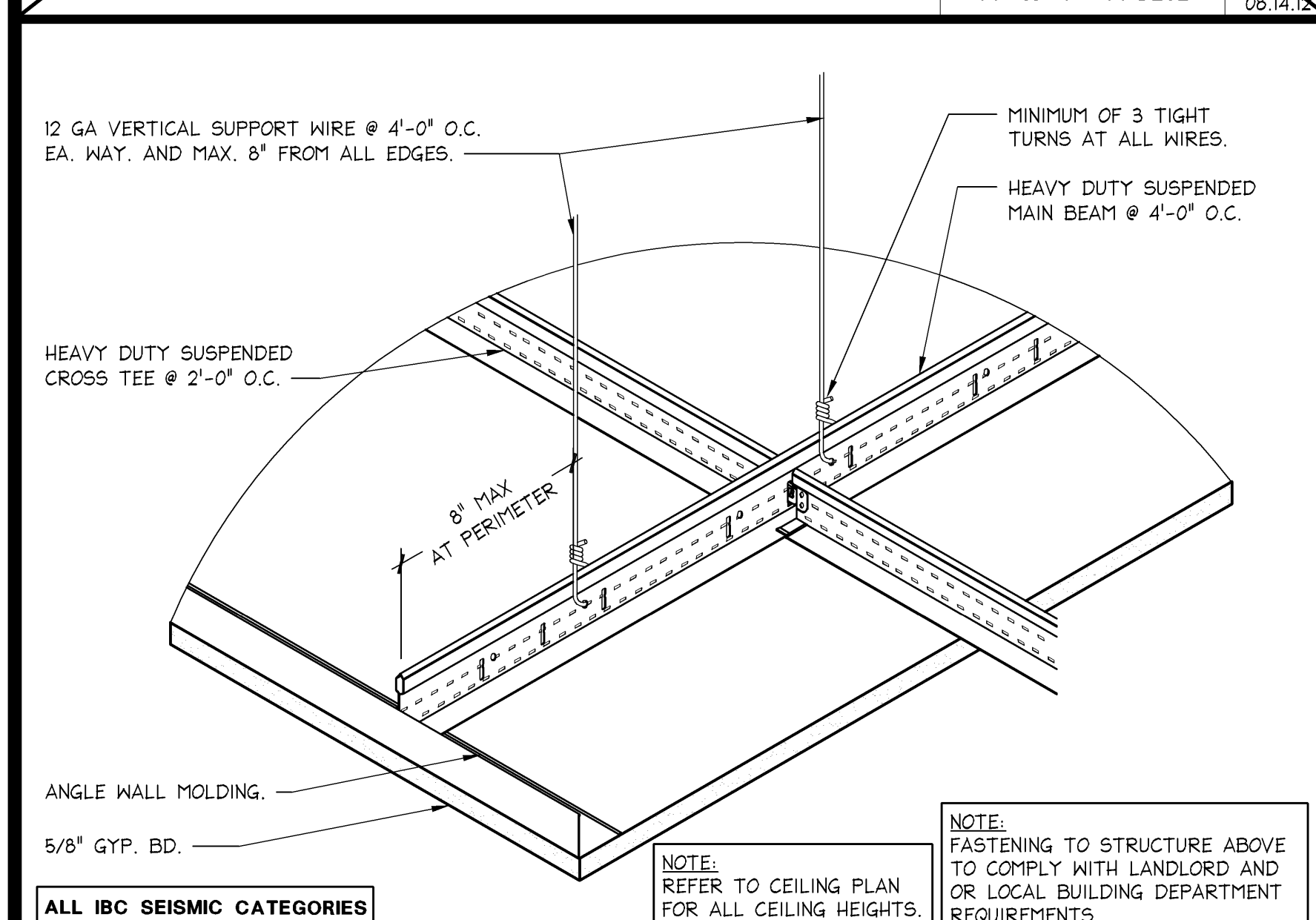


FIRE BARRIER - 1 HOUR

1" ± 1'-0"

05D-A1201-B00-DETL

08.14.12

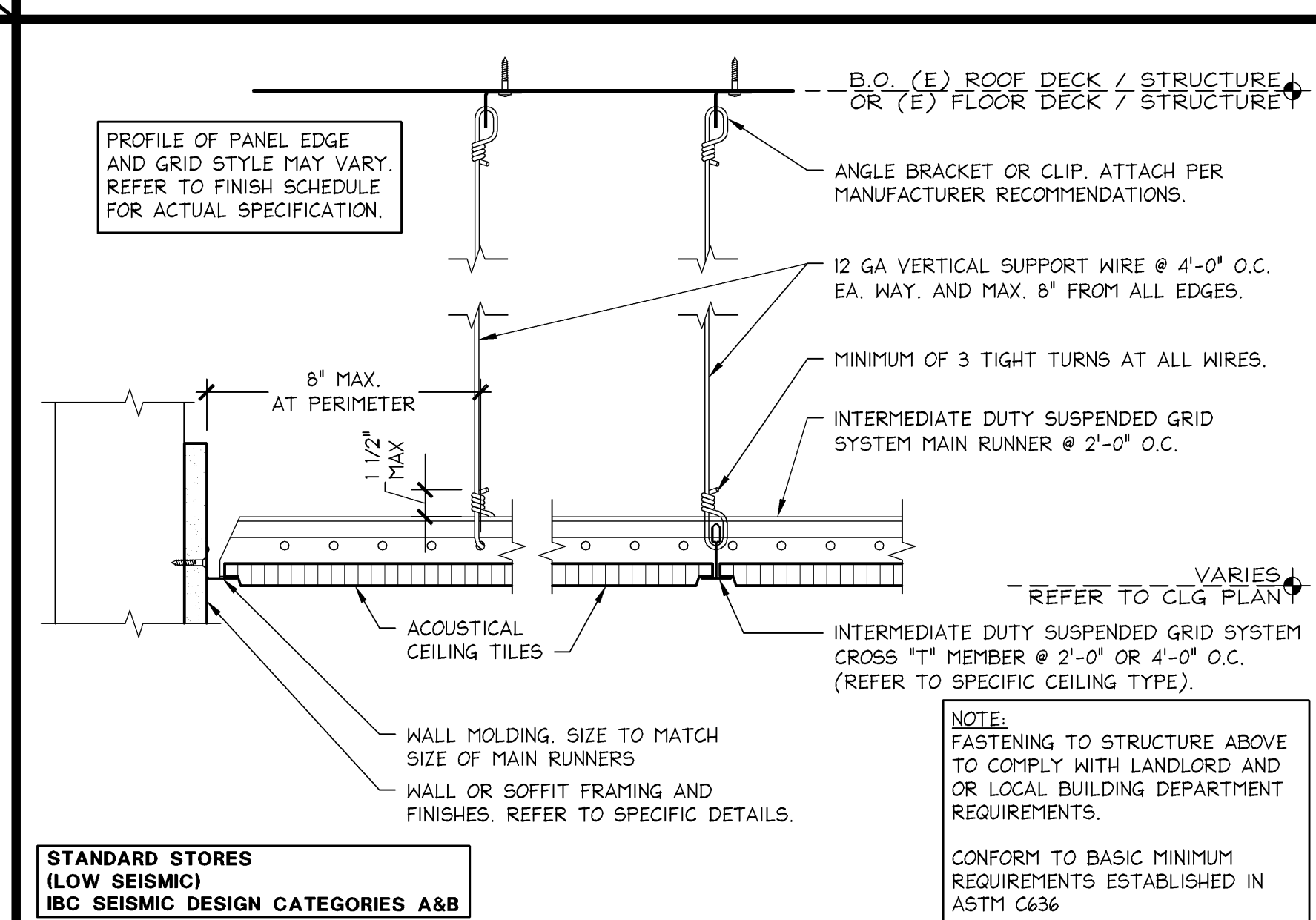


SUSPENDED GYP. BD. CEILING

3" ± 1'-0"

05D-A1201-N00-DETL

08.14.12

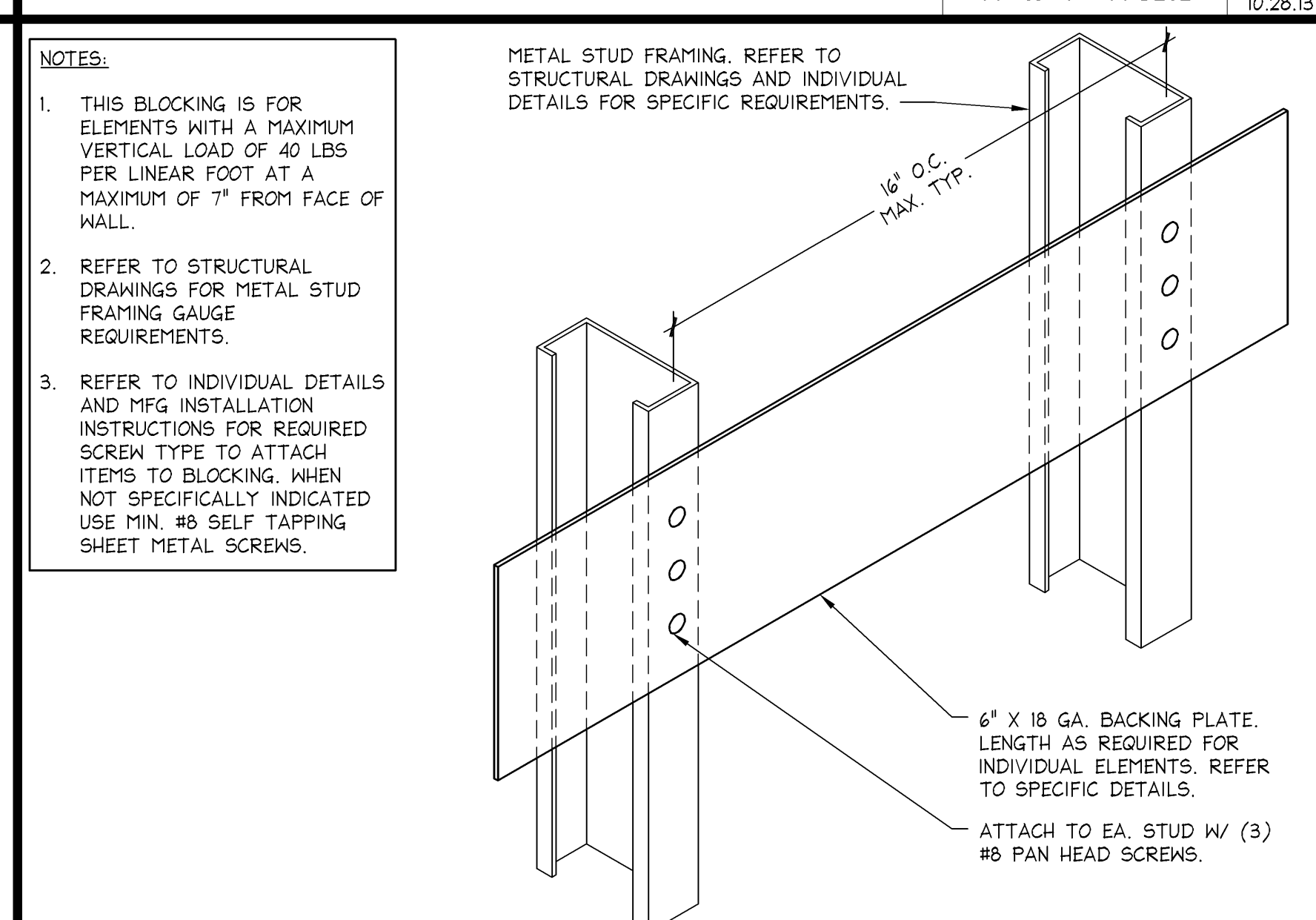


ACOUSTICAL CEILING TILE

3" ± 1'-0"

05D-A1201-J00-DETL

02.22.14

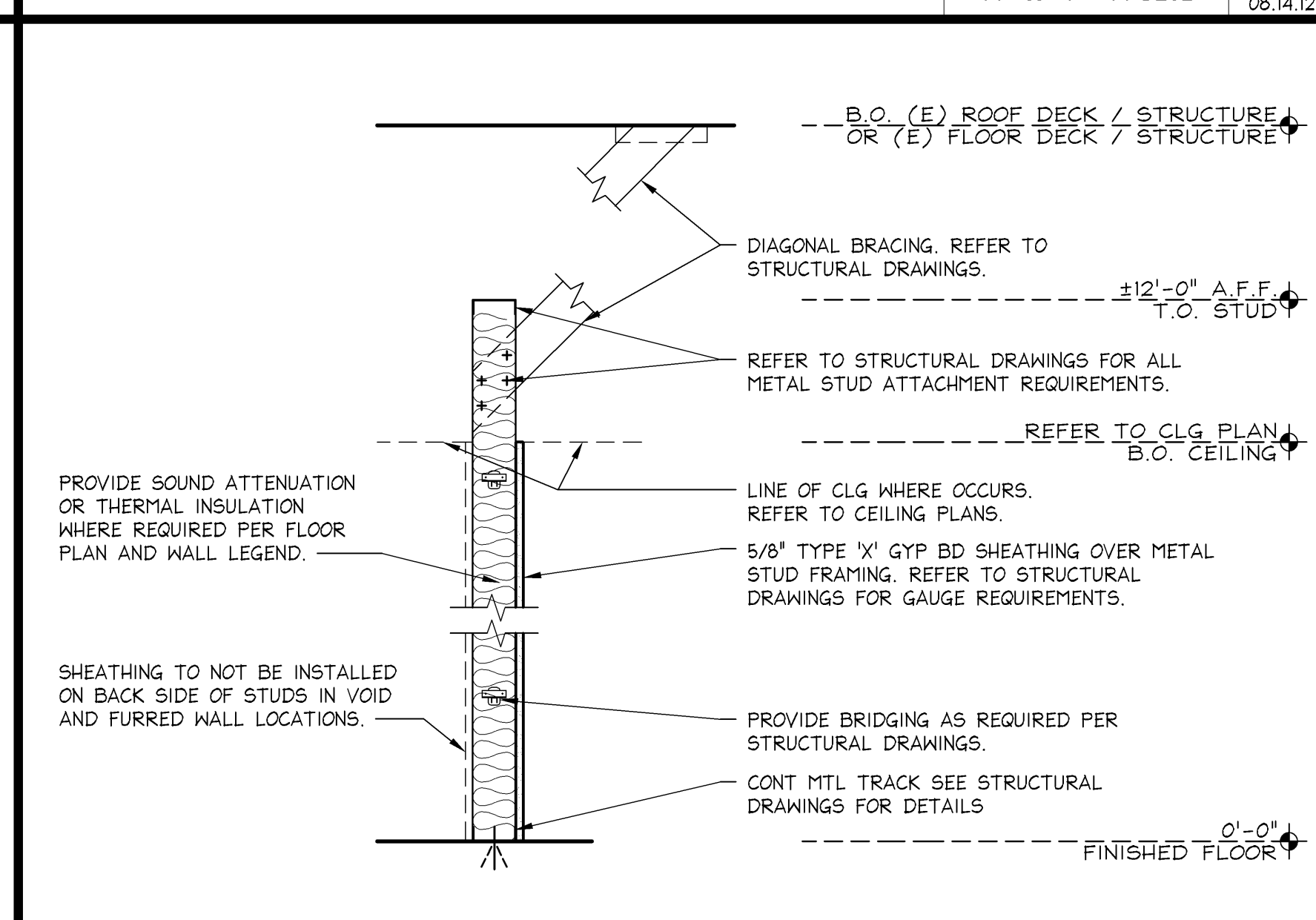


BACKING - MEDIUM DUTY

3" ± 1'-0"

05D-A1201-E00-DETL

10.28.13



NON-RATED PARTITION

1" ± 1'-0"

05D-A1201-A00-DETL

08.14.12